



****AVAILABLE JUNE 2026** **FURNISHED****
****SEPARATE STUDY**** A spacious first floor Tyneside style flat found in ever popular Jesmond Vale! Situated on Grosvenor Gardens, only a stone's throw from Jesmond Dene, this property boasts period features, a separate work from home space and is well furnished throughout.

The property briefly comprises; an entrance hallway with stairs to the first floor landing; two double bedrooms, the master of which with bay window and feature fireplace; lounge central to the property with fitted storage space and dining area; separate study to the front of the property; modern kitchen with appliances; shower room WC. Fully furnished, with gas central heating and double glazed windows throughout. Externally there is a private yard to the rear and on street parking to the front.

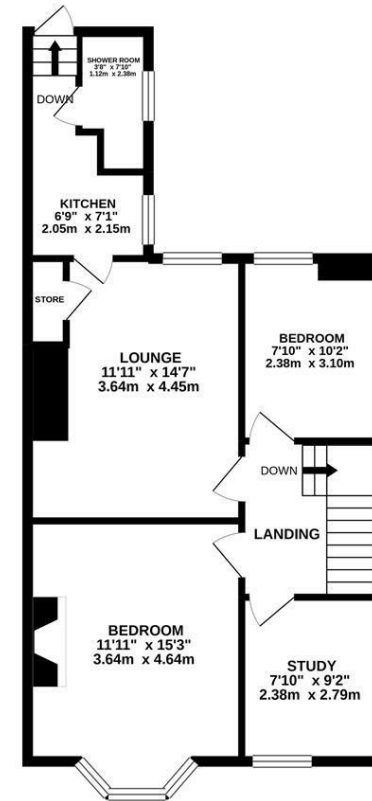
Available 26th June 2026 | £1,000pcm | First Floor Tyneside Flat | 661 Sq. ft (61.4 m2) | Great Location | Two Bedrooms | Separate Study | Lounge | Kitchen | Shower Room WC | Good Storage Space | Furnished | On Street Parking | Private Rear Yard | Close To Jesmond Dene | Council Tax Band: A | DG & GCH | EPC Rating: C



GROUND FLOOR
 36 sq ft (3.3 sq m) approx.



FIRST FLOOR
 623 sq ft (57.9 sq m) approx.



TOTAL FLOOR AREA : 661 sq ft (61.4 sq m) approx.

Whilst every attempt has been made to ensure the accuracy of the floorplan contained herein, measurements of doors, windows, rooms and any other items are approximate and no responsibility is taken for any error, omission or mis-statement. This plan is for illustrative purposes only and should be used as such by any prospective purchaser. The services, systems and appliances shown have not been tested and no guarantee as to their operability or efficiency can be given.
 Made with Metropix ©2020



£1,000 PCM

IMPORTANT NOTE: These particulars and the descriptions and measurements herein do not constitute representation and whilst every effort has been made to ensure accuracy, this cannot be guaranteed.

